

Oboe I

DER MESSIAS

MESSIAH

Erster Teil

Part the First

Sinfony

G. Fr. Händel
(1685 - 1759)

Grave

9

1. 2. Allegro moderato

17

25

1

36

43

51

59

66

73

82

91

[tr]

Oboe I

1 **Accompagnato** *tacet*

2 **Aria** *tacet*

3 **Chorus**

Allegro

11 *p*

25 *f*

36 *Ten.*

da es Gott
for the mouth

59 *ritto*

wer-den es se-hen,
see it to-ge-ther,

73

86 *ritto*

101

113 *ritto*

128 *Adagio*

4 *Accompagnato tacet*

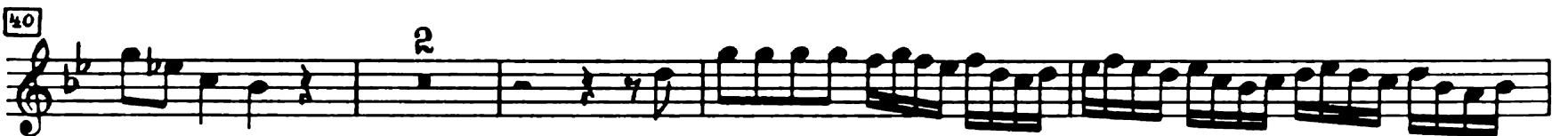
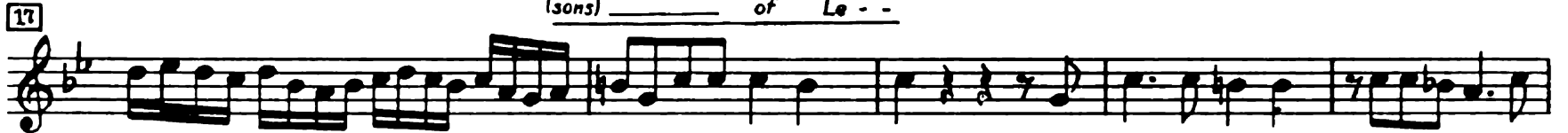
5 *Aria tacet*

6 Chorus

Allegro



(Volk) _____ des Bun -
(sons) _____ of Le - -



7 *Recitativo tacet*

8 Aria

Andante 100 *Alto*

Herr-lich - keit des Herrn geht auf ü - ben
glo - ry of the Lord is ris - - en up-

attacca il Coro

9 Chorus

7 *dir.*
on thee.

13

20

26 11

10 Accompagnato *tacet.*

11 Aria *tacet*

12 Chorus

Andante allegro

5

10

15

18 *Ten.*

und die Herrschaft ist ge-legt auf sei-ne Schul - - -
and the government shall be up-on His shoul - - -

30

36

47

52

63

69

75

78

83

88

und die Herrschaft ist ge-legt auf sei-ne Schul -
and the government shall be up-on His schoul -

3 2 Basso 1

13 Pifa *tacot*

14 Recitativo *tacot*

15 Chorus

Allegro

10

5

Oboe I

49 *Fl. II*

25 *f*

35 *f*

3

7

16 Aria *tacet* 17 Recitativo *tacet* 18 Aria *tacet*

17a Recitativo *tacet* 18a Duetto *tacet*

19 Chorus

Allegro

5

14

20

24

33

39

44

4

Fl. I

f

2

Oboe I

Zweiter Teil

Part the Second

20 Chorus

Largo
3

Musical notation for Chorus 20, measures 1-32. The music is in 3/4 time, marked *Largo*. It features a melodic line with various rhythmic values including eighth and sixteenth notes, and rests. Measure numbers 9, 15, and 22 are indicated at the start of their respective staves. A triplet of eighth notes is marked with a '3' at the end of the final measure.

21 Aria *tacet*

22 Chorus

Largo
4 *VI.I*

Musical notation for Chorus 22, measures 1-17. The music is in 4/4 time, marked *Largo*. It features a melodic line with various rhythmic values including eighth and sixteenth notes, and rests. Measure numbers 9 and 17 are indicated at the start of their respective staves. First and second endings are marked with '1' and '2' above the notes.

23 Chorus

Alla breve, Moderato

Musical notation for Chorus 23, measures 1-50. The music is in 2/4 time, marked *Alla breve, Moderato*. It features a melodic line with various rhythmic values including eighth and sixteenth notes, and rests. Measure numbers 13, 25, and 40 are indicated at the start of their respective staves. First and second endings are marked with '1' and '2' above the notes. A section marked *VI.II* begins at measure 44.

Oboe I

53 *Vl. II*

68 *Vla.* *Adagio*

Detailed description: This block contains two staves of musical notation. The first staff, labeled '53 Vl. II', shows a melodic line with a dynamic marking 'p' at the beginning. The second staff, labeled '68 Vla. Adagio', shows a more complex melodic line with various ornaments and a dynamic marking 'p' at the beginning. The key signature has two flats and the time signature is 3/4.

24 Chorus

Allegro moderato

Detailed description: This block contains ten staves of musical notation for the Chorus section, labeled '24 Allegro moderato'. The notation includes various rhythmic patterns, including eighth and sixteenth notes, and rests. There are several first and second endings marked with '1' and '2'. The key signature has two flats and the time signature is 3/4. The section concludes with the tempo marking 'Adagio' at measure 72.

25 *Accompagnato tacet*

26 Chorus

Oboe I

Allegro

11 *rit.*

3 *rit.*

38

35

3 1

1

Adagio

27 Accompagnato *tacet*

28 Arioso *tacet*

29 Accompagnato *tacet*

30 Aria *tacet*

31 Chorus

A tempo ordinario

3 *rit.*

6

Oboe I

21 *rit.*

22

38

44 1

52

59

65

71

32 *Recitativo tacet*

33 Chorus

Allegro

9

17 3

26 3

34 *Aria tacet*

34a *Aria tacet*

Oboe I

35 Chorus

Andante allegro

Musical score for Oboe I, Chorus section (measures 35-40). The score is in G major, 2/4 time, and consists of five staves of music. Measure numbers 35, 36, 37, 38, and 39 are indicated at the start of each staff. The music features a rhythmic pattern of eighth and sixteenth notes.

36 Aria *tacet*

36a Aria *tacet*

36b Soli e Chorus

Andante

4/7

Sopr.

Musical score for Oboe I, Soli e Chorus section (measures 47-119). The score is in G major, 4/7 time, and consists of seven staves of music. Measure numbers 47, 48, 49, 50, 51, 52, and 53 are indicated at the start of each staff. The music includes vocal lines with lyrics: "dein Gott wal - - tet!" and "thy God reign - . eth!". The score features various musical notations including slurs, accents, and dynamic markings like *f*. Measure numbers 1, 2, 3, and 4 are also present, likely indicating first endings or specific phrasing.

Oboe I

130

140

150

37 Chorus

A tempo ordinario

159

169

176

182

37a Arioso *tacet*

38 Aria *tacet*

38a Aria *tacet*

39 Chorus

Allegro e staccato

196

200

Oboe I

30

34

38

42

46

40 Recitativo *tacet*

41 Aria *tacet*

41a Recitativo *tacet*

42 Chorus

Allegro

3

9

15

22

28

33

5

Oboe I

67 *rit.*

68

76

82

Dritter Teil

Part the Third

43 Aria *tacet*

44 Chorus

Grave *Sopr.* *Allegro*

Ei-nen der Tod:
man came death,

Grave *Sopr.*

A-dam al-les stirbt:
Ad-am all die,

49

45 *Accompagnato tacet*46 *Aria tacet*47 *Recitativo tacet*48 *Duetto tacet*

Oboe I

49 Chorus

Andante

50 Aria *tacet*

51 Chorus

Largo

Andante

Thron, und al-so dem Lamm,
Throne, and un-to the Lamb,

Oboe I

57 *vi-*
58
59
60
61
65 *Adagio*
attacca

52 Chorus

Allegro moderato

28 *v. I*
38
46
53
64
71
79 *Adagio*

Oboe II

DER MESSIAS

MESSIAH

Erster Teil

Part the First

G. Fr. Händel
(1685 - 1759)

Sinfony

Grave

1 *Accompagnato tacet*

2 *Aria tacet*

3 *Chorus*

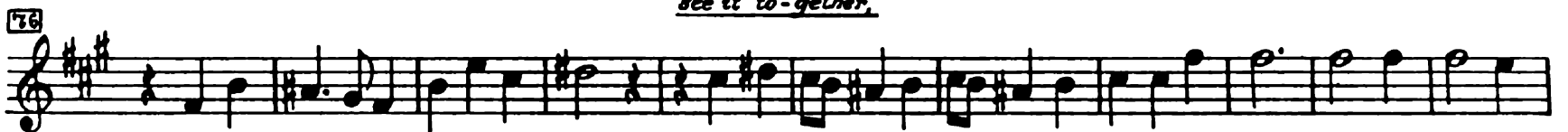
Allegro



*da es Gott
for the mouth*



*werden es sehen,
see it to-gether.*



Adagio

4 *Accompagnato tacet*

5 *Aria tacet*

6 *Chorus*

Allegro

(Volk) ——— des Bun-
(sons) ——— of Le - -

7 *Recitativo tacet*

16

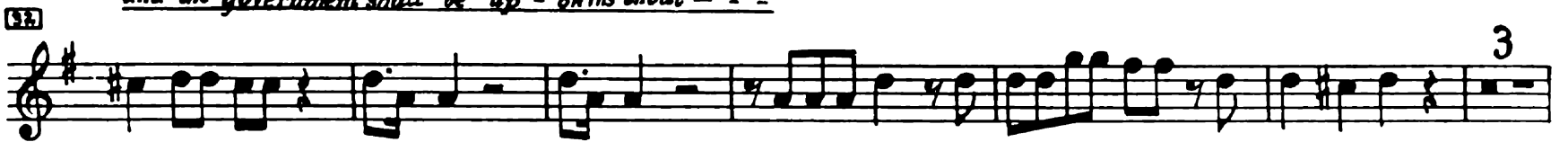


26

Ten.



32



41

Basso



49



56



65



73



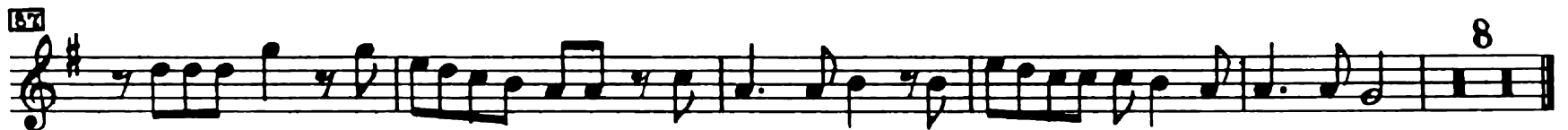
77



81



87



13 Pifa *tacet*

14 Recitativo *tacet*

Oboe II

15 Chorus

Allegro

16 Aria *tacet*

17 Recitativo *tacet*

18 Aria *tacet*

17a Recitativo *tacet*

18a Duetto *tacet*

19 Chorus

Allegro

Zweiter Teil

Part the Second

20 Chorus

Largo
3

Musical score for Oboe II, Chorus 20, *Largo* 3/4. The score consists of four staves. The first staff starts at measure 1. The second staff starts at measure 9. The third staff starts at measure 17. The fourth staff starts at measure 23 and ends with a triplets sign (3) over the final notes.

21 Aria *tacet*

22 Chorus

Largo
4

Musical score for Oboe II, Chorus 22, *Largo* 4/4. The score consists of three staves. The first staff starts at measure 1 and includes a first ending (fl. I) marked with a bracket and a first ending sign. The second staff starts at measure 9 and includes a first ending sign. The third staff starts at measure 17 and includes a second ending sign (2).

23 Chorus

Alla breve, Moderato

Musical score for Oboe II, Chorus 23, *Alla breve, Moderato*. The score consists of four staves. The first staff starts at measure 1. The second staff starts at measure 12 and includes first and second ending signs (1 and 2). The third staff starts at measure 25 and includes a first ending sign (4) and a first ending sign (fl. II). The fourth staff starts at measure 40 and includes a first ending sign (4).

Oboe II

51 *Vl. II*

52 *Vla.*

53 *Adagio*

Detailed description: This block contains three staves of musical notation. The first staff (measures 51-52) is marked 'Vl. II' and begins with a piano (p) dynamic. The second staff (measures 53-54) is marked 'Vla.' and features a trill ornament. The third staff (measures 55-56) is marked 'Adagio' and shows a change in tempo and dynamics.

24 Chorus
Allegro moderato

Detailed description: This block contains ten staves of musical notation for the Chorus section, marked 'Allegro moderato'. The notation includes various rhythmic patterns, including sixteenth-note runs and triplet markings (1, 2, 3). The section concludes with a change to 'Adagio' in the final staff (measures 77-78).

25 *Accompagnato tacet*

26 Chorus
Allegro

Musical score for Oboe II, measures 11 to 57. The score is in 3/4 time and features a key signature of two flats. It includes various musical notations such as slurs, accents, and dynamic markings. Measure numbers 11, 18, 27, 35, 43, 51, and 57 are indicated at the start of their respective staves. Performance instructions include *Allegro* at the beginning and *Adagio* starting at measure 57. Specific markings include *vl. II* at measure 11, *3 vl. F* at measure 21, and *3* and *1* above notes in measures 43 and 51 respectively.

27 *Accompagnato tacet*

28 *Arioso tacet*

29 *Accompagnato tacet*

30 *Aria tacet*

31 Chorus
A tempo ordinario

Musical score for Oboe II, measures 71 to 85. The score is in 3/4 time and features a key signature of two flats. It includes various musical notations such as slurs, accents, and dynamic markings. Measure numbers 71, 81, and 85 are indicated at the start of their respective staves. Performance instructions include *A tempo ordinario* at the beginning. Specific markings include *3 vl. I* at measure 81 and *6* above notes in measure 85.

Oboe II

31 *VI. I*

32

33

34

35

36

37

38

39

40

41

42

43

44

45

46

47

48

49

50

51

52

53

54

55

56

57

58

59

60

61

62

63

64

65

66

67

68

69

70

32 *Recitativo tacet*

33 **Chorus**
Allegro

34

35

36

37

38

39

40

41

42

43

44

45

46

47

48

49

50

51

52

53

54

55

56

57

58

59

60

61

62

63

64

65

66

67

68

69

70

34 *Aria tacet*

34a *Aria tacet*

Oboe II

35 Chorus
Andante allegro

36 Aria *tacet*

36a Aria *tacet*

36b Soli e Chorus

Oboe II

34

35

37 Chorus

Allegro ordinario

37

38

39

40

41

42

37a *Arioso tacet*

38 *Aria tacet*

38a *Aria tacet*

39 Chorus

Allegro e staccato

39

40

41

24 1



32



38 1



44



52 8



40 Recitativo *tacet*


41 Aria *tacet*

41a Recitativo *tacet*


42 Chorus

Allegro


3




9




13 2




23



28



32 5



Oboe II

47 Fl. I

48

49

50

51

Dritter Teil
Part the Third

43 Aria *tacet*

44 Chorus

Grave 4 Sopr. Allegro

Ei-nen der Tod:
man came death,

Grave 4 Sopr.

A-dam alles stirbt:
Ad-am all die,

45 Allegro

46

47

48

45 Accompagnato *tacet*

46 Aria *tacet*

47 Recitativo *tacet*

48 Duetto *tacet*

49 Chorus
Andante

49
51
55
59
63
67
71
75
79
83
87
91
95
99
103
107
111
115
119
123
127
131
135
139
143
147
151
155
159
163
167
171
175
179
183
187
191
195
199
203
207
211
215
219
223
227
231
235
239
243
247
251
255
259
263
267
271
275
279
283
287
291
295
299
303
307
311
315
319
323
327
331
335
339
343
347
351
355
359
363
367
371
375
379
383
387
391
395
399
403
407
411
415
419
423
427
431
435
439
443
447
451
455
459
463
467
471
475
479
483
487
491
495
499
503
507
511
515
519
523
527
531
535
539
543
547
551
555
559
563
567
571
575
579
583
587
591
595
599
603
607
611
615
619
623
627
631
635
639
643
647
651
655
659
663
667
671
675
679
683
687
691
695
699
703
707
711
715
719
723
727
731
735
739
743
747
751
755
759
763
767
771
775
779
783
787
791
795
799
803
807
811
815
819
823
827
831
835
839
843
847
851
855
859
863
867
871
875
879
883
887
891
895
899
903
907
911
915
919
923
927
931
935
939
943
947
951
955
959
963
967
971
975
979
983
987
991
995
999

50 Aria *tacet*

51 Chorus

51
55
59
63
67
71
75
79
83
87
91
95
99
103
107
111
115
119
123
127
131
135
139
143
147
151
155
159
163
167
171
175
179
183
187
191
195
199
203
207
211
215
219
223
227
231
235
239
243
247
251
255
259
263
267
271
275
279
283
287
291
295
299
303
307
311
315
319
323
327
331
335
339
343
347
351
355
359
363
367
371
375
379
383
387
391
395
399
403
407
411
415
419
423
427
431
435
439
443
447
451
455
459
463
467
471
475
479
483
487
491
495
499
503
507
511
515
519
523
527
531
535
539
543
547
551
555
559
563
567
571
575
579
583
587
591
595
599
603
607
611
615
619
623
627
631
635
639
643
647
651
655
659
663
667
671
675
679
683
687
691
695
699
703
707
711
715
719
723
727
731
735
739
743
747
751
755
759
763
767
771
775
779
783
787
791
795
799
803
807
811
815
819
823
827
831
835
839
843
847
851
855
859
863
867
871
875
879
883
887
891
895
899
903
907
911
915
919
923
927
931
935
939
943
947
951
955
959
963
967
971
975
979
983
987
991
995
999

Largo *Andante* *Largo* *Andante* *Larghetto*

Ten.

Thron, und al-so dem Lamm,
throne, and un-to the Lamb,

Oboe II

37

V_i-
♩

43

49

-de
♩

57

62

66

Adagio

attacca

52 Chorus

Allegro moderato

28

vl. I

38

46

53

64

73

79

Adagio